

Auto Excel ITNS 281 Challan Help

Whats New in Version-4.00?

On the requests of the members, now database option has been given for retaining the Deductor's record.

1. Format of the File

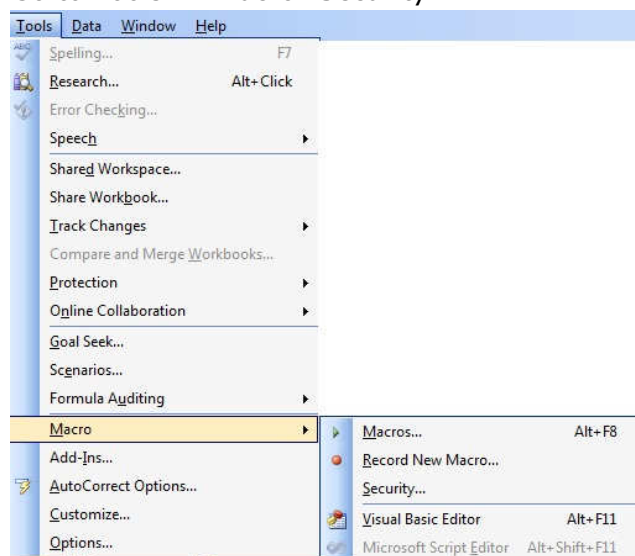
The Challan is in **Excel 97-2003** (*.xls) Format.

2. Macro Problems:

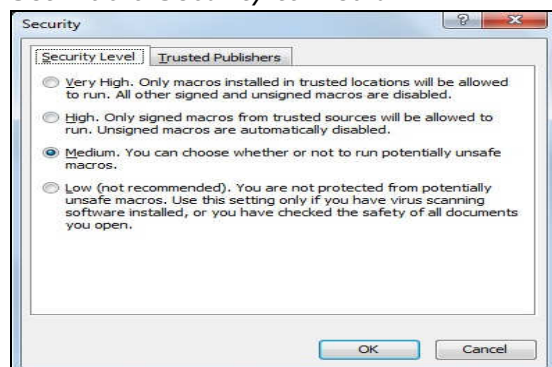
Macro must be enabled to use the functions of this Challan. For this you will need the following steps:

In Excel 2003 or earlier versions

Go to Tools> >Macro>Security



Set macro Security to Medium



On File Opening you will be asked to enable macros, Choose Enable Macros

Visit <http://abcaus.in> for more excel utilities



In Excel 2007 or later versions

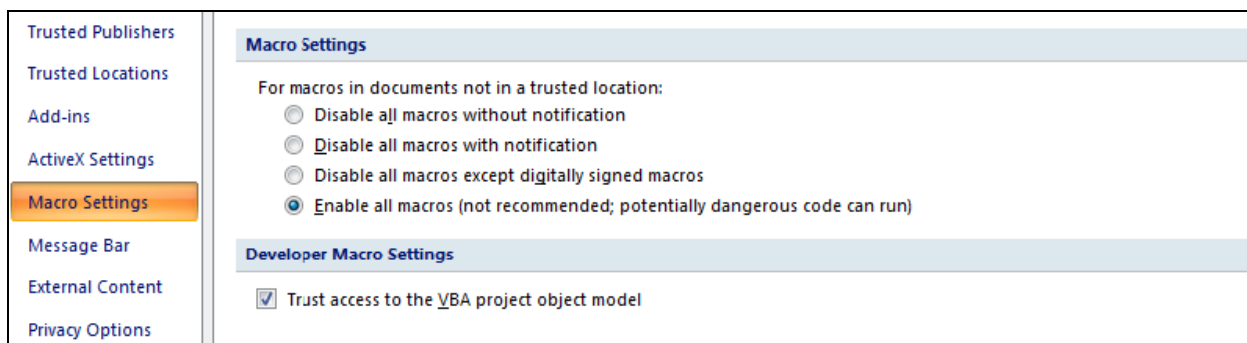
Run Excel2007 then click Office Button at the topmost left



Go to **Excel Option>Trust Centre>Trust Centre Settings>Macro Settings**, then check the following two settings

Enable All Macros

Trust Access to the VBA Project Object Model



3. Steps to Fill ITNS 281 Challan in Excel

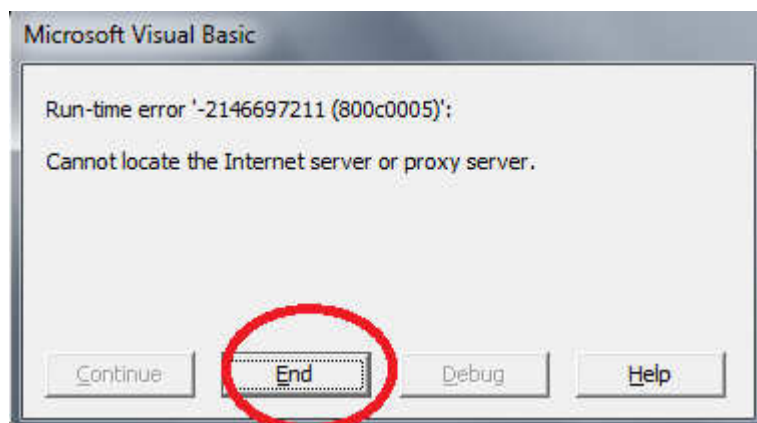
3.1 Welcome Screen

On loading of the file you will get an welcome screen as under:



Visit <http://abcaus.in> for more excel utilities

After you click on OK Button you can proceed to fill the challan form. However if your internet is not connected you might get an error message as under:



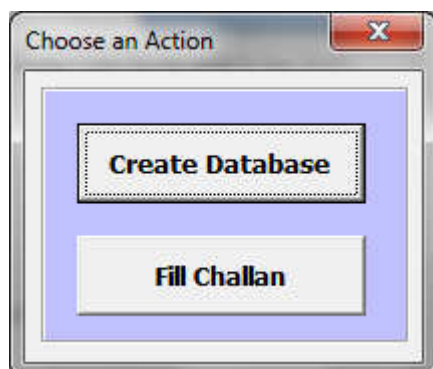
If you get the above message, click on the **End Button** and you can proceed to fill the challan.

3.2 Click red "Fill Form" Button

Fill ITNS 281

at the top right of the excel sheet.

On Clicking the Button, you shall be asked to create a database or fill the challan (if you have already made a database). You are required to have a database of assessee's details created first. The window shall be like this:



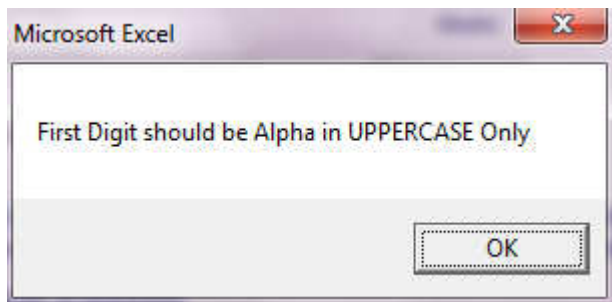
3.3 Creating Database

Click on create database button shall take you to database form:

Visit <http://abcaus.in> for more excel utilities

You are required to fill the details and add them to database.

The form has a built in check for TAN Structure (4Alpha-5Numeric-1Alpha). In case of wrong inputs in any of ten digits, user shall be warned



3.4 Altering Database

Alterations/Editing can be made to database entries from DATABASE Sheet with the help of Edit Button there.

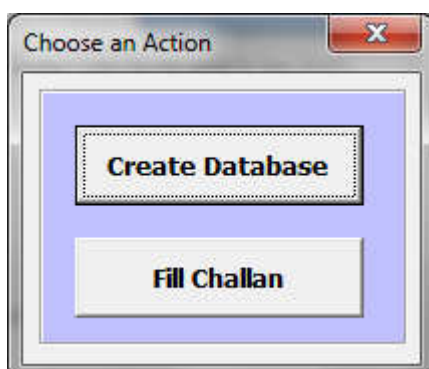


The Modification window looks like as under:

A screenshot of a window titled 'Edit Deductor's Record'. It contains three steps: Step-1: Select TAN (with a dropdown menu showing 'PKLA44444T'), Step-2: Make required changes here (with input fields for TAN, Full Name, Complete Address, With City & State, State, PIN, and Tel No.), and Step-3: Select an action (with 'MODIFY' and 'EXIT' buttons).

3.5 Filling the Challan

After creating the database, you can fill the challan by using Fill Challan Button.



Visit <http://abcaus.in> for more excel utilities


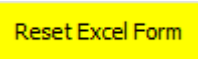
The Auto Form shall open for Data Entry.
Example of the Auto Form is as under

You are required to

- (a) Choose TAN for which tax is to be deposited.
- (b) Fill information in all Text Boxes provided (Examples as per form above)
- (c) Select the appropriate Check Box (Examples as per form above)
- (d) Select the appropriate choice from Drop Down Box

3.6 After the form has been filled, Click on Green Fill Button  to fill the Challan Form in excel sheet.

If after clicking on Fill Button, you need any correction, reload the entry form and fill only the field requiring the change. However you will be required to tick all the check boxes again

To reset the Entry Form click on Red Reset Button . To Reset the Excel Challan click on yellow  Button without filling any data

Visit <http://abcaus.in> for more excel utilities

To Close the form, click on Orange Close Button

Close

By clicking on **View Code Details** Button, Detailed Payment Code List can be viewed in a pop up window as under.

Codes			X
Section	Nature of Payment	Code	
192	Payment to Govt. Employees other than Union Government Employees	92A	
192	Payment to Employees other than Govt. Employees	92B	
193	Interest on Securities	193	
194	Dividend	194	
194A	Interest other than Interest on Securities	94A	
194B	Winnings from lotteries and crossword puzzles	94B	
194BB	Winning from Horse Race	4BB	
194C	Payment to Contractors and sub-contractors	94C	
194D	Insurance Commission	94D	
194E	Payments to Non Resident Sportsman/Sport Association	94E	
194EE	Payments in respect of Deposits under National Saving Schemes	4EE	
194F	Payment on account of Re-purchase of units by Mutual Funds or UTI	94F	
194G	Commission, Prize etc. on sale of Lottery Tickets	94G	
194H	Commission or Brokerage	94H	
194I	Rent	94I	
194J	Fees for Professional or Technical Services	94J	

4. Steps to reset the data filled in ITNS 281 Sheet in Excel

Fill ITNS 281

To reset the data filled in Excel ITNS 281, Click on "Fill Button" and then without filling any details click on **Reset Excel Challan** Button.

It will reset and blank the filled data in ITNS 281 Excel Sheet and it shall be ready for fresh use.

5. Page Setup and Print Out of Filled ITNS281 in Excel

You can adjust the margins from page setup menu to ensure that print area covers all the fields. Use normal print command to print Page

If you encounter any error, please write to me at lohni@yahoo.com

CA Ashutosh Lohani
15 Chandganj Garden
Lucknow-226024
<http://abcaus.in>